

SYNAPSE INSTALLATION GUIDE

1. If using Windows XP, skip this step and go to #2. If using Windows Vista, right click your Internet Explorer shortcut and select “Run as administrator”. See **image # 1** below.
2. Via Internet Explorer navigate to the following URL; <https://continuum.asp.fujimed.com>
3. You’ll be prompted for user name / password. See **image #2** below.
4. Authenticate with information provided by Radiology I.S.
5. If you’re using a personal account for your PC, then check on “Remember my password”.
6. Once authenticated, you’ll be presented with the Synapse Workstation Code Download page.
7. Click on the Synapse link to begin installation. The RED “A” in Synapse is a link. See **image #3**.
8. Wait a few minutes and do not continue clicking the Synapse link from step #7.
9. Progress of installation will begin, followed by a successful message. See **image#4 and #5** below.
10. Close webpage and navigate to the control panel. Click “START” and select “Control Panel”.
11. Switch to CLASSIC view. Left part of your screen options. See **image #6** below.
12. Double click Synapse Icon and select “Data Source Settings”. See **image #7** below.
13. Check on Use encrypted communication and on “Enable pre-caching images for slow networks”.
14. Select Clinical radio buttons under the AON Factor for Initial Display. See **image #7** below.
15. Click on the Security tab and check on, “Allow access to Synapse from Desktop”. See **image#8**.
16. Click the OK button and from the desktop, double click the SYNAPSE shortcut. See **image #9**.
17. This opens a webpage where you can begin the application. Click the link, see **image #10**.

Image: 1

IE –Run as Admin

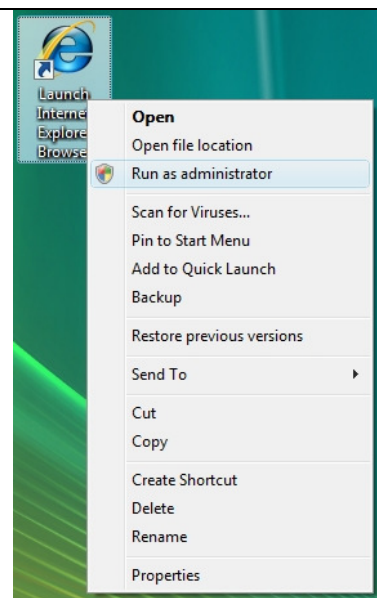
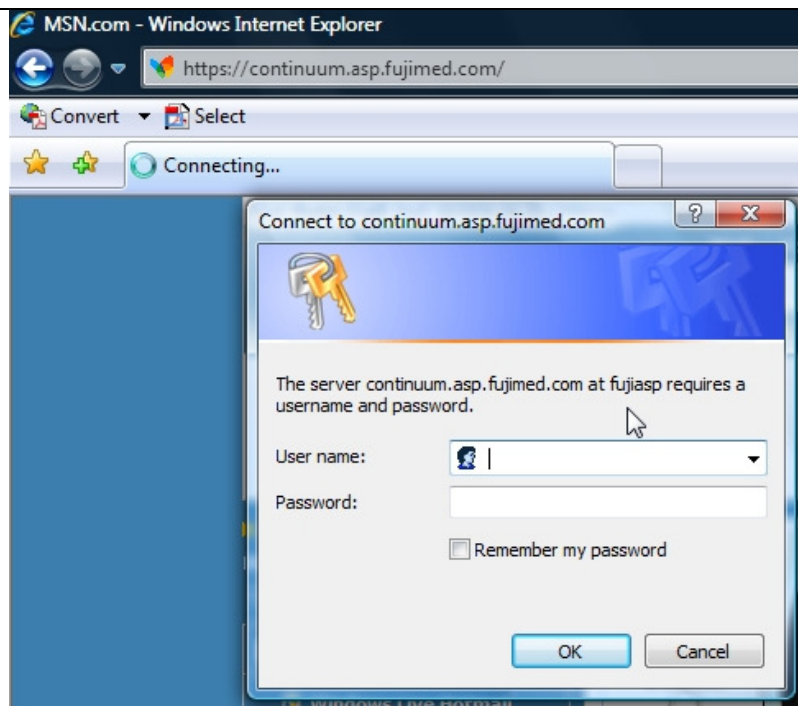


Image: 2

Active Directory Challenge



SYNAPSE INSTALLATION GUIDE

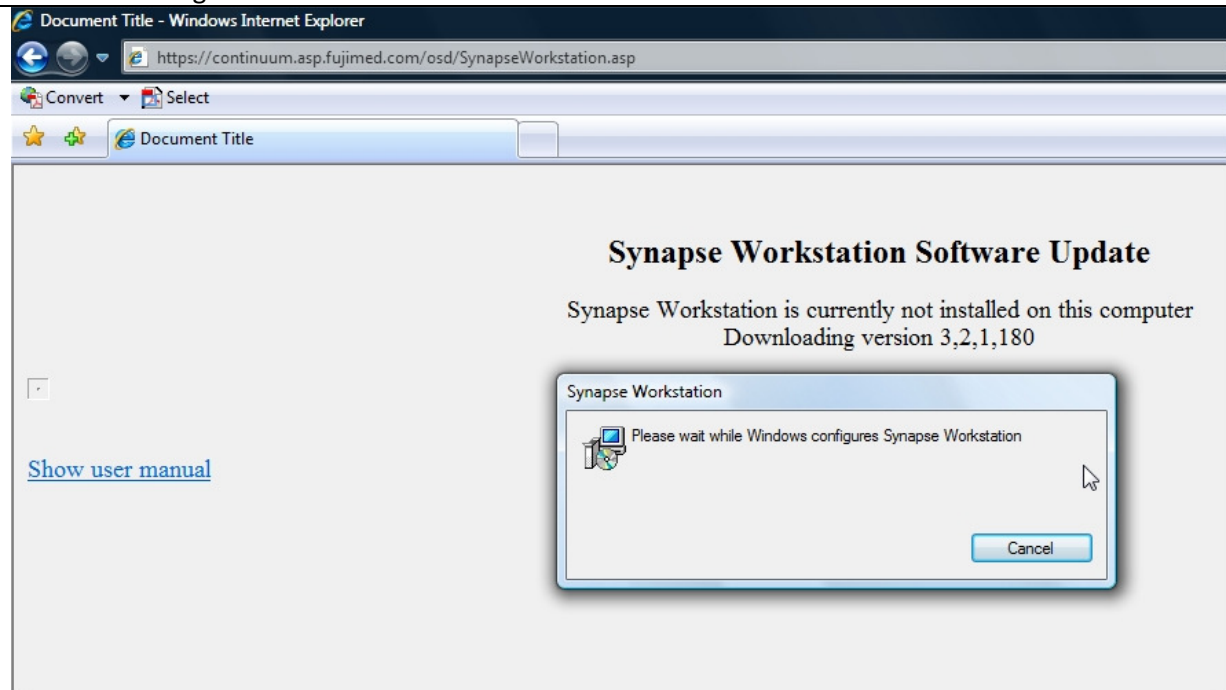
Image: 3

Installation Link



Image: 4

Installation Progress



SYNAPSE INSTALLATION GUIDE

Image: 5

Installation Successful

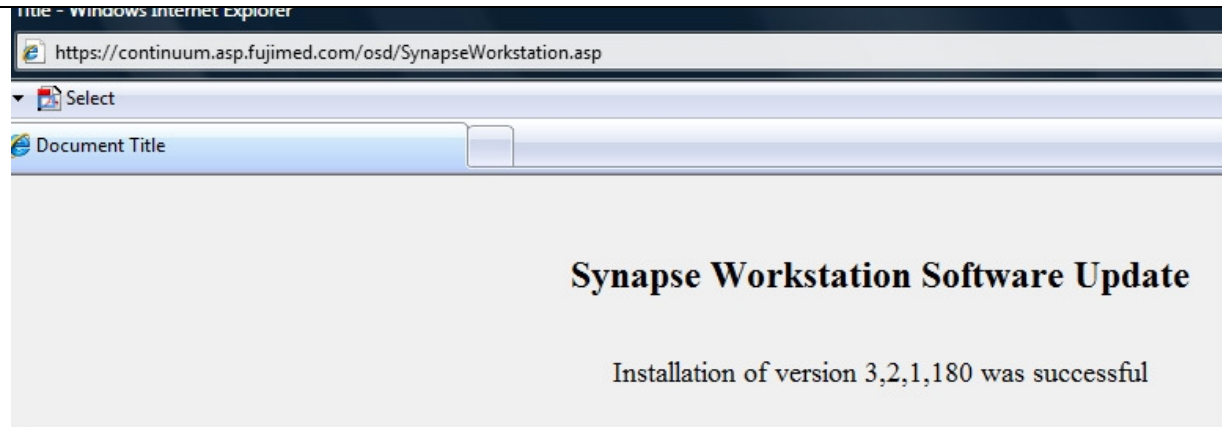
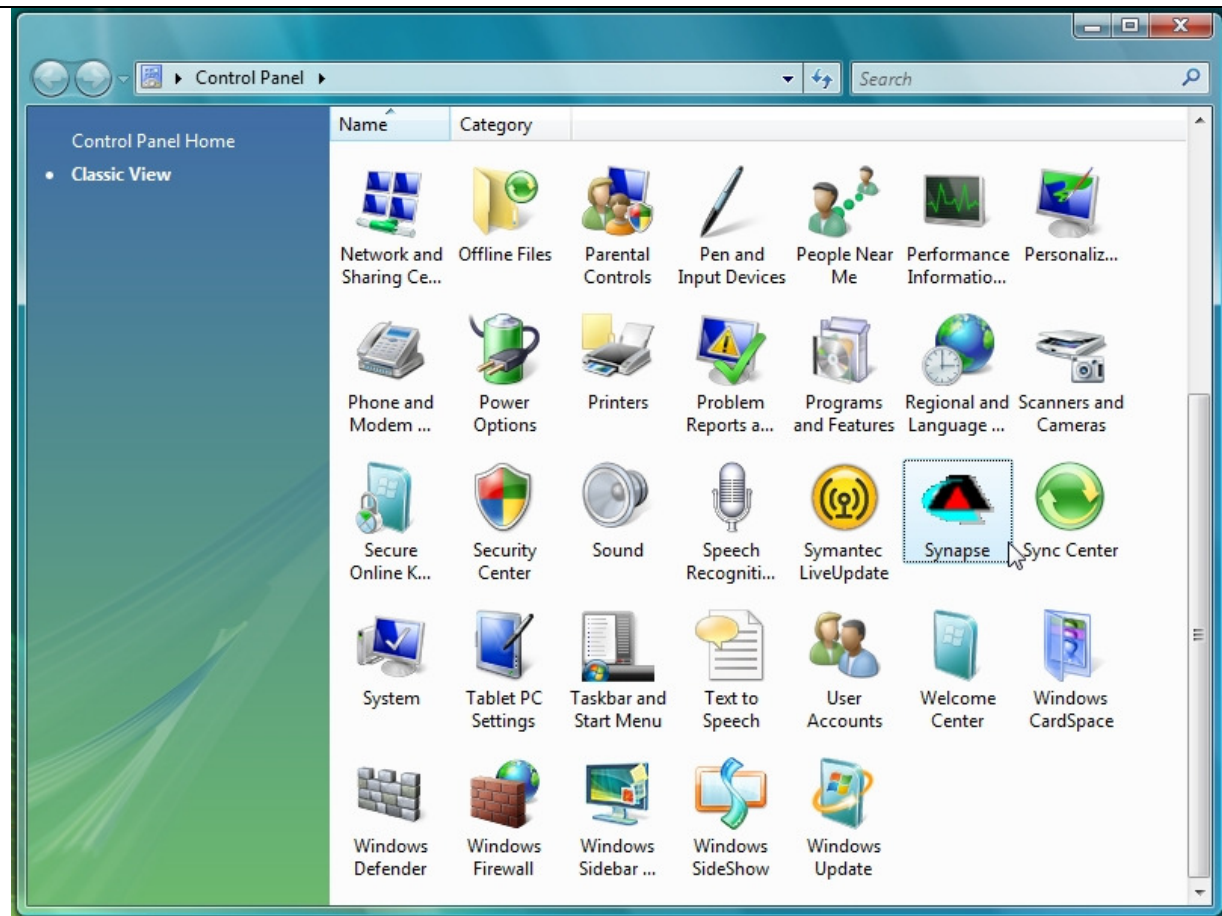


Image: 6

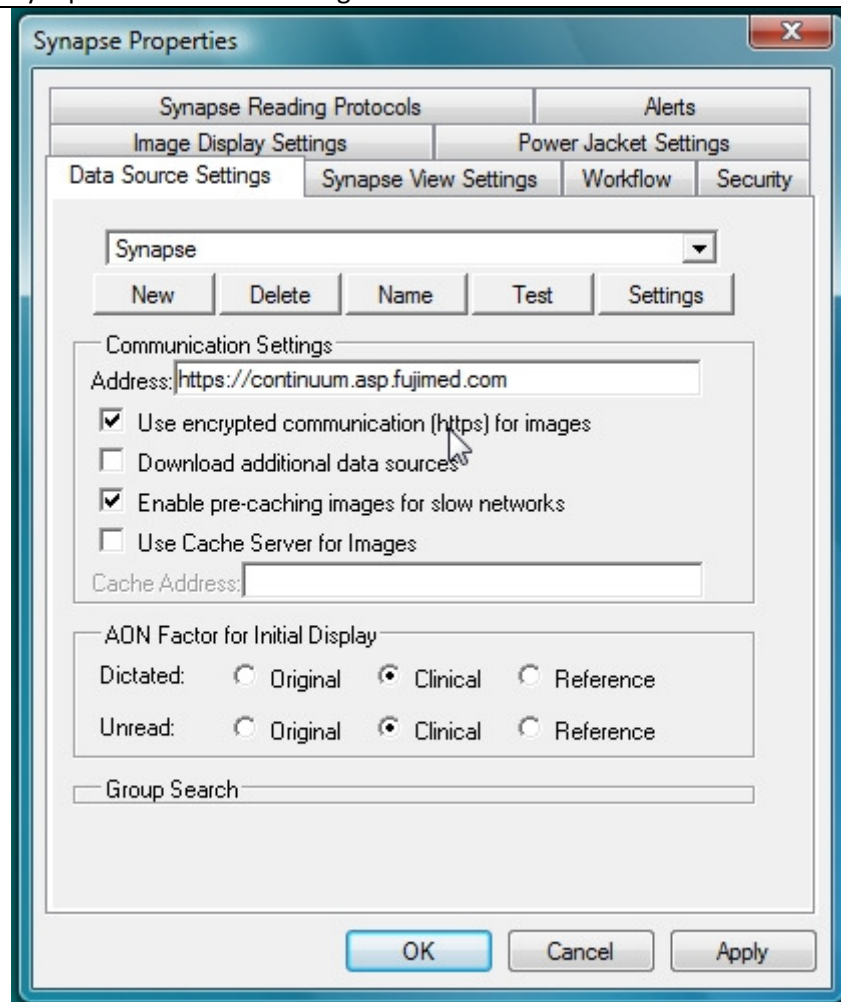
Vista Control Panel



SYNAPSE INSTALLATION GUIDE

Image: 7

Synapse Data Source Settings



SYNAPSE INSTALLATION GUIDE

Image: 8

Synapse Data Source Settings

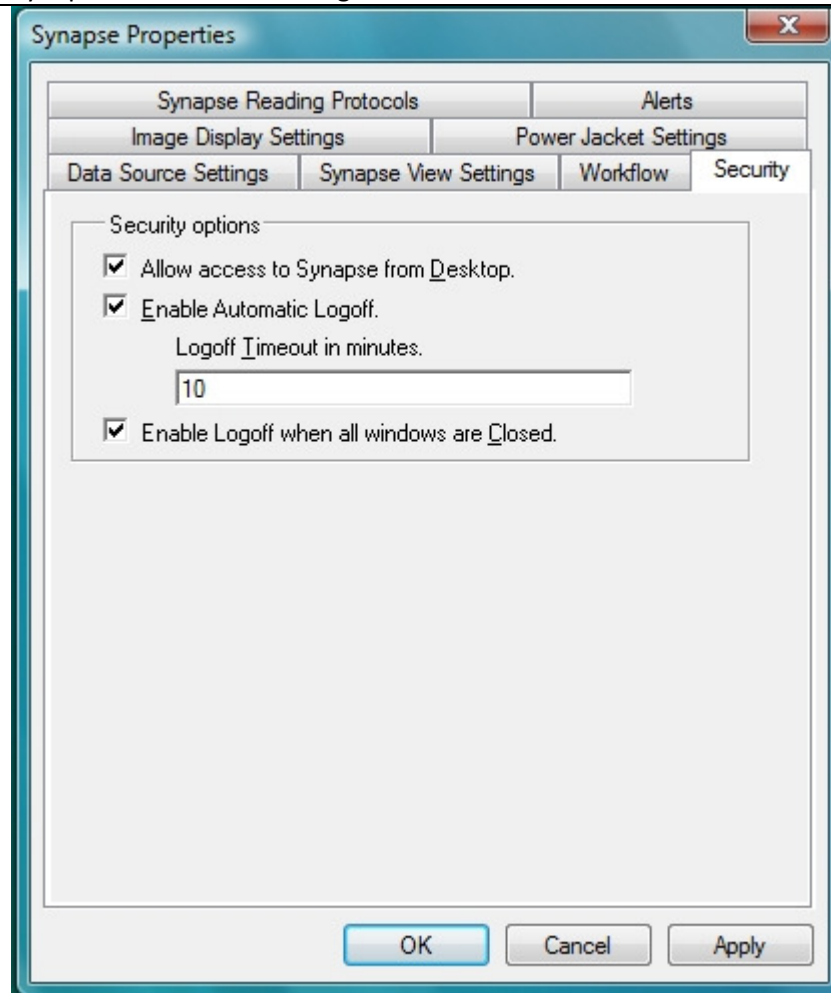


Image: 9

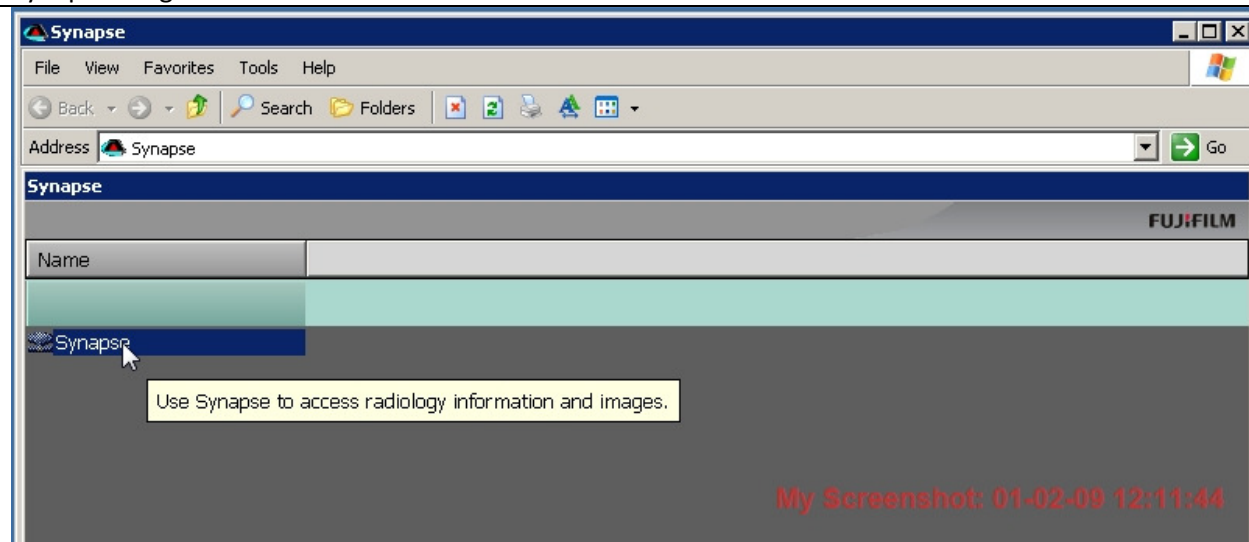
Synapse Desktop Icon



SYNAPSE INSTALLATION GUIDE

Image: 10

Synapse "Begin" Link



SUPPORT CONTACTS

Roosevelt Hospital 1000 10 TH Ave, New York, NY 10019 t. 212-523-7322 slrris@chpnet.org	ST. Luke's Hospital 1111 Amsterdam Ave, New York, NY 10025 t. 212-523-5388 slrris@chpnet.org
Beth Israel Hospital 330 East 17TH St, New York, NY 10003 t. 212-420-5611 bimcris@chpnet.org	

TRANSMISSION DATA TO SYNAPSE

WSRA 59th Street:

- All Mammography reports
- All US report
- All CR images and reports

Columbus Circle Imaging:

- All CT/PET images and reports
- All MRI images and reports
- All XA reports

SYNAPSE INSTALLATION GUIDE

1090:

- All Mammography reports
- All US report
- All CR images and reports

Central Park Women's Imaging:

- All mammography reports
- All US reports

USDI:

- All CT/PET images and reports
- All MRI images and reports
- All XA reports
- All US reports

EMDI 89TH:

- All CT images and reports
- All MRI images and reports

EMDI KWAY:

- All CT images and reports
- All MRI images and reports

EMDI DOVE:

- All MRI images and reports